

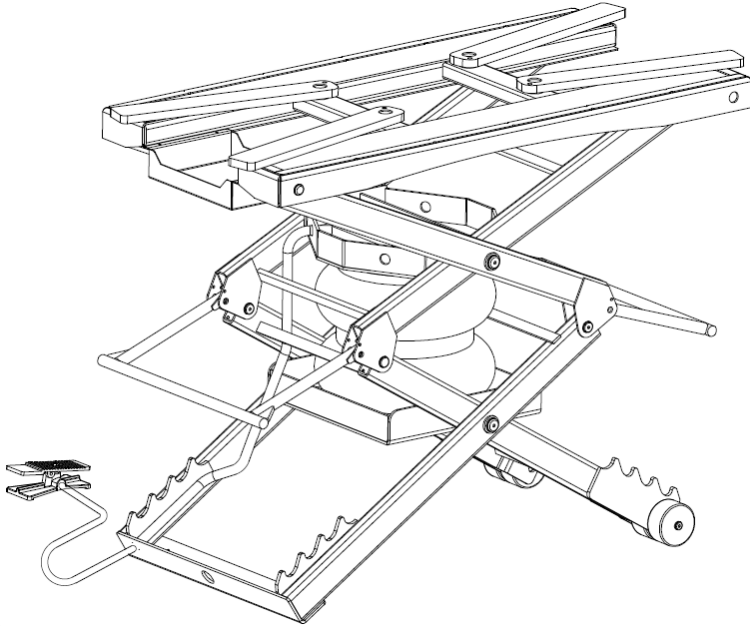


## **B.U.L. LIFT – Item # 22750**

Instructions ~ Part drawings ~ Part list



**WARNING: READ INSTRUCTIONS BEFORE OPERATING**

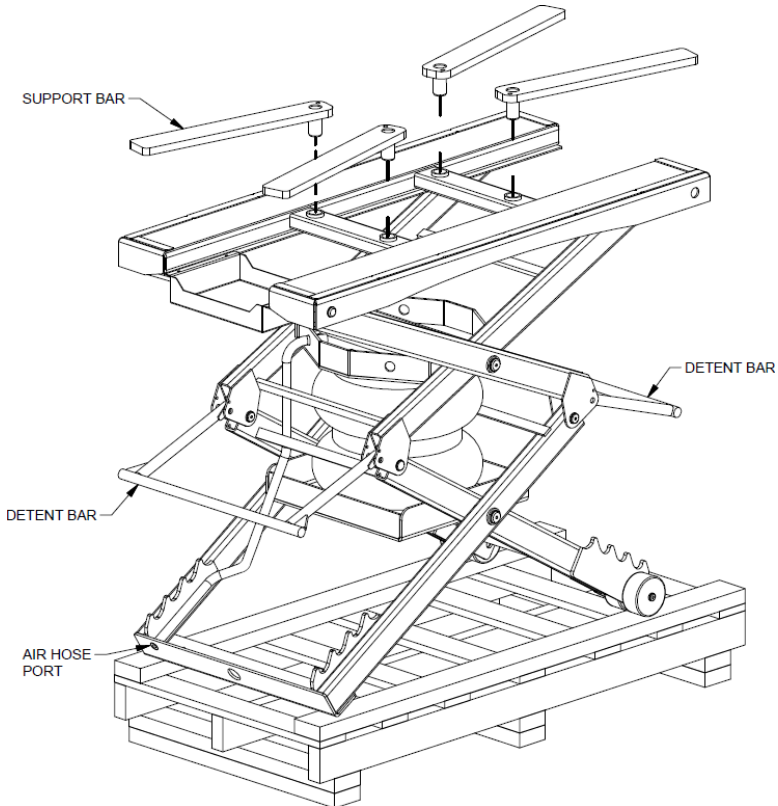


- 1. Center load on table = 2500 lb. maximum.**
- 2. Connect to 120 psi maximum shop air.**
- 3. Keep safety bar in position at all times - except when lowering.**
- 4. Keep hands and tools from under carriage.**
- 5. Do not mount table when in elevated position.**
- 6. Do not ride vehicle onto lift.**
- 7. Lift must be in the lowered position when moving.**
- 8. Only trained persons should operate air lift.**
- 9. The working area should be sufficiently lit.**
- 10. Foot controller should be at least 3 feet away from air lift during raising and lowering operation.**
- 11. Recommended for indoor use only.**
- 12. Tie-down straps must be used in conjunction with the holes provided in the lift top.**
- 13. Exhaust all air from bellows before removing the load from the lift.**
- 14. Hose may remain connected, but when desired height is reached, foot pedal must be in down position. Failure to put pedal in down position may result in airbag failure.**

**NOTE: READ ENTIRE MANUAL TO COMPLY WITH ALL SAFETY AND SERVICE PRECAUTIONS. DEATH, PERSONAL INJURY AND/OR PROPERTY DAMAGE MAY OCCUR UNLESS INSTRUCTIONS ARE FOLLOWED CAREFULLY.**

## **UNPACKING AND SET-UP**

1. Cut banding and remove carton top.
2. Remove the two anchors that secure lift to the pallet.
3. Remove the air hose and connect to the air supply.
4. Stand clear of lift table and press the UP side of the foot pedal to raise lift.
5. Lower detent bars and release air pressure by pressing the DOWN side of the foot pedal.
6. Remove support bars from under the lift and install on top of the lift.
7. Utilizing TWO people, slide one end of the lift off the pallet while the 2<sup>nd</sup> person stabilizes the other side.
8. Slide the other end off of the pallet and discard pallet.



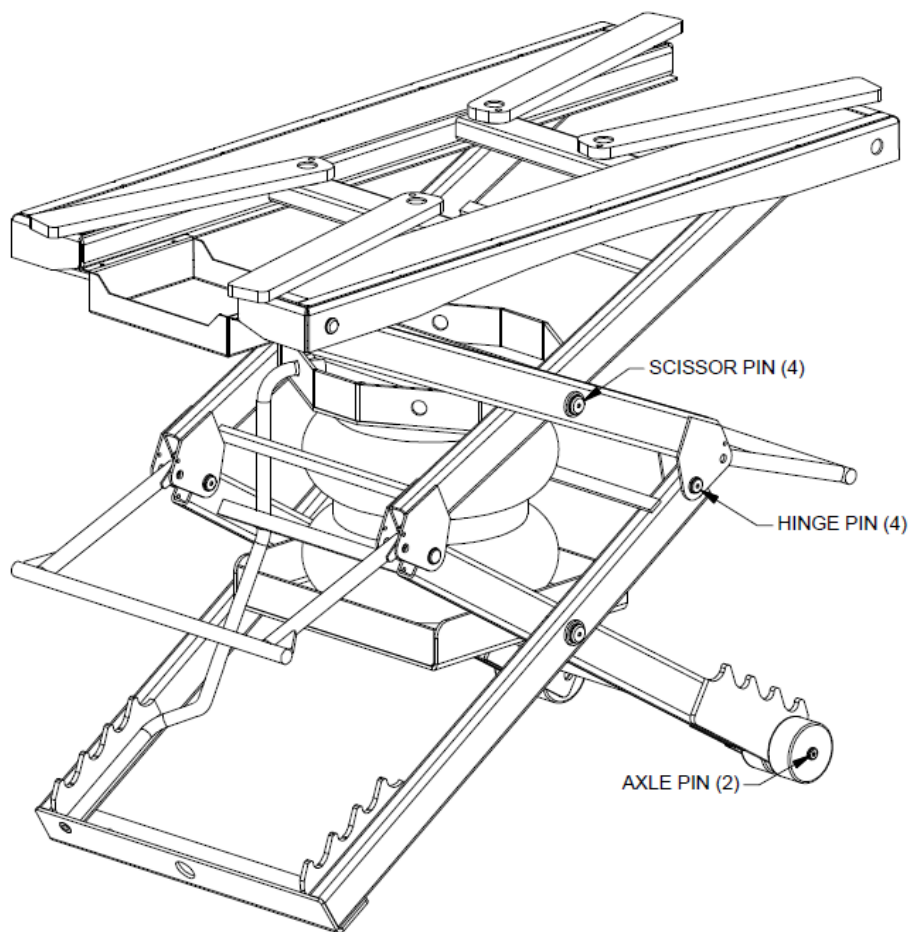
## **OPERATION**

1. Loads must be centered at all times. Lift is rated at a maximum of 2500 lbs.
  2. It is the operator's responsibility to determine if load needs to be additionally secured with straps.
  3. To raise lift press UP side of the pedal, to lower lift press DOWN side of the pedal.
  4. Support arms should be adjusted to support vehicle at appropriate lifting points.
  5. Once lift is raised to the desired height, flip down BOTH detent bars and release air pressure so that the lift comes to rest on the detent bars. ALWAYS make sure to you use BOTH detent bars, and check visually to make sure they come to rest in the same detent teeth.
- ▲ FAILURE TO CORRECTLY USE BOTH DETENT BARS COULD CAUSE SERIOUS INJURY AND/OR PROPERTY DAMAGE!**
- ▲ IT IS VERY IMPORTANT THAT OIL DRAIN PAN IS RETURNED TO EITHER END OF THE LIFT TO PREVENT DAMAGE WHEN LOWERING LIFT.**

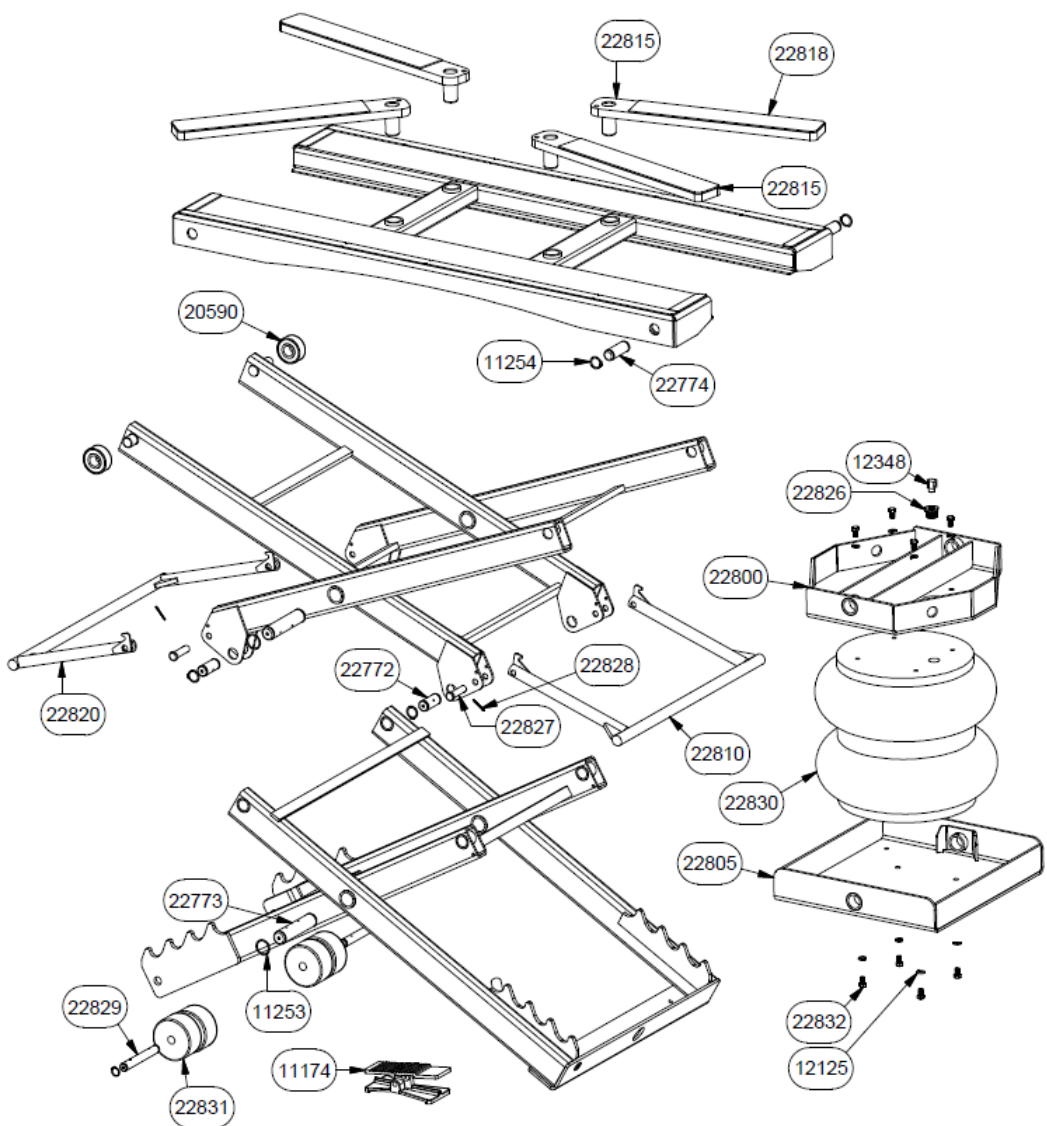
## **RECOMMENDED MAINTENANCE**

1. Daily visual checks:
  - A. Check that all pins are secured with appropriate retaining rings.
  - B. Inspect air bag, and air hose for leaks, wear, and interference with lift frames.
2. All moving parts have been lubricated at the factory, and should be re-lubricated every month to prevent galling. Grease points noted on Fig. 2 on next page.
3. To prevent galling, grease also may need to be applied to the support arm pins located on the lift top.

FIGURE 2.



# PARTS DRAWING



## PARTS LIST

QTY	PART No.	DESCRIPTION
1	10372	RING RETAINING 3/4
1	11174	FOOT PEDAL ASSEMBLY
2	11253	RING RETAINING WHEEL 1 5/16 SPIRAL
4	11254	RING RETAINING 1
8	12125	3/8 LOCK WASHER
1	12348	FITTING 1/4 STREET L 1/4X1/4 116-AB
2	20590	BEARING ROLLER TRACK BRB5305-2RS
4	22772	FRAME PIN
4	22773	SCISSOR PIN
2	22774	TOP MOUNT PIN
1	22800	UPPER BAG MOUNT
1	22805	LOWER BAG MOUNT
1	22810	REAR DETENT BAR
4	22815	SUPPORT ARM
4	22818	SUPPORT ARM PAD
1	22820	FRONT DETENT BAR
1	22826	3/4NPT TO 1/4 NPT BUSHING
2	22827	1/2" DIA CLEVIS PIN
2	22828	PIN COTTER 1/8 X 7/8 PLATED
2	22829	AXLE PIN
1	22830	AIR BELLOWS
4	22831	4" PHENOLIC WHEEL
8	22832	3/8 X 1 HEX BOLT

## ***LIMITED LIFETIME WARRANTY***

Handy, Division of Janco Industries, Inc. is providing a limited lifetime warranty on its motorcycle lift line. This Lifetime Limited Warranty is available on lifts that have a serial number the same as or greater than those listed: Standard 1000 Air and Electric #ST0138, S.A.M. 1000 Air and Electric #S0082, S.A.M. 2 1000 Air #S20020, B.O.B. 1500 Air #B0100, Electric/Hydraulic 1500 #H0008, Gruntavore 1800 #GR0004, Dual Lift (all serial numbers), B.U.L. (all serial numbers), Standard 1200 Air Lift (all serial numbers), and S.A.M. 1200 Air Lift (all serial numbers). The purchaser must provide Handy with a legible copy of the purchase receipt to obtain this warranty. The purchaser must provide Handy notice of the defect and establish that the equipment was properly set up, maintained and operated within the limits of rated and normal usage. Handy, Division of Janco Industries, Inc. reserves the right to have its product shipped back to the factory for inspection to ensure the lift was not being used above its rated limits and capacity. The purchaser is responsible for freight charges until a determination is made by Handy. Handy will reimburse the purchaser if it is determined that he or she was not using the lift above the rated capacity. This warranty covers the structure for the following models of Handy lifts: Standard 1000, S.A.M. 1000, S.A.M. 2 1000, B.O.B. 1500, Electric/Hydraulic 1500, Gruntavore 1800, Dual Lift, B.U.L., Standard 1200 Air Lift, and S.A.M. 1200 Air Lift. Attachments for these lift models are not included in the limited lifetime warranty. This warranty only covers the structure of the lift itself. It does not cover any cost of labor, transportation, freight, installation, misuse, abuse or rust or failure of the air cylinder and/or foot pedal due to rust and/or moisture. Also excluded in this warranty are items that were purchased for the Handy lift and installed on it after the factory such as electric motors, hand-held pendants and bearings. Parts considered wearable carry a 90-day warranty. All other parts excluded from the lifetime warranty carry a 1-year warranty from time of purchase. If the lift is purchased from an un-authorized distributor, eBay or other online service, you are not eligible to receive the limited lifetime warranty for the structure of the lift. This warranty is only offered to the original purchaser and is non-transferrable. It must be purchased from Handy, Division of Janco Industries, Inc. or one of its authorized distributors.



This product has been fully assembled according to manufacturing print and includes all required component parts.

Product has been tested and passed all inspections free of any leaks or malfunction.

**Inspected by:**

---

Handy, Division of Janco Industries Inc.  
600 W 2<sup>nd</sup> Ave, Sully, IA 50251  
Ph: 855-752-5446 Fax: 641-594-3330  
[www.handyindustries.com](http://www.handyindustries.com)